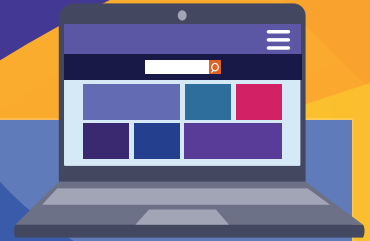


Cheshire West & Chester Council

Here to help

How to access our services



Do it online

Online is the quickest way to access Council services



Visit our website

cheshirewestandchester.gov.uk



Report issues through our app

Visit the app store and search **Cheshire West and Chester**



Set up a digital account with us

Go to **my account** at the top of our website



Access support to get online

You can access our digital services at a wide range of Council buildings

Call us



Ring our contact centre

Call **0300 123 8123**. Available Monday to Friday 8am - 7pm



Visit us



Book an appointment to see us

Call **0300 123 8123** to see a dedicated customer service adviser, with a range of times and locations available to suit you.

Resident Assistance Points are available in some Council buildings and libraries. Here you can drop-in to access a public telephone and computers for Council business and seek guidance from our staff about Council services.



Council buildings (supported by specialist customer service advisers)

Chester: Town Hall (side entrance)

Ellesmere Port: The Portal

Northwich: Information Centre

Winsford: Wyvern House



Libraries

Ellesmere Port Library

Frodsham Library

Neston Library

Winsford Library



Scan me

Scan the QR code for Resident Assistance Point locations and opening times



Cheshire West
and Chester